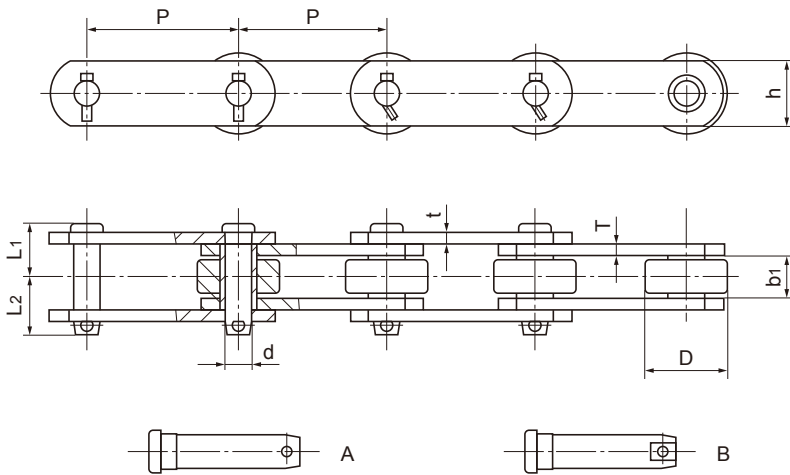
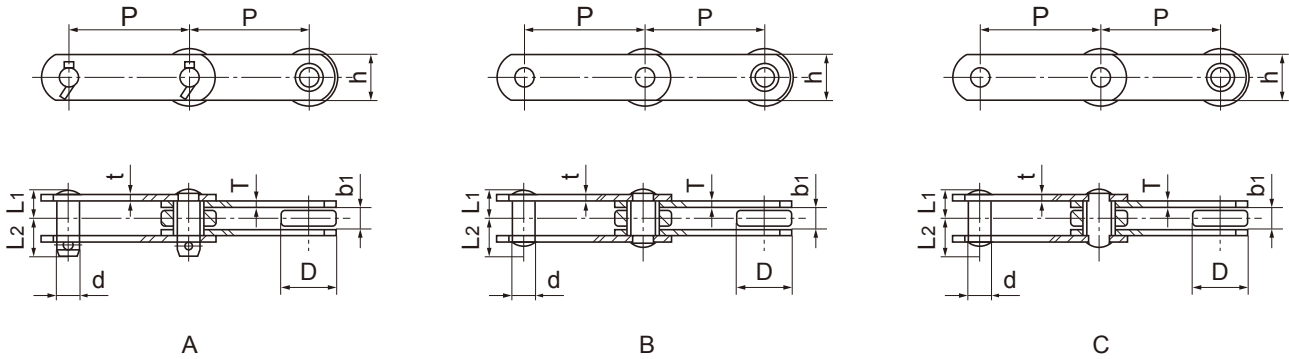


# Palm Oil Chains with Straight Plate

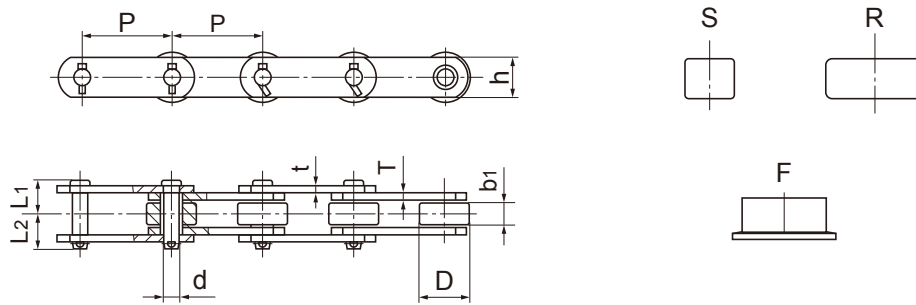


NET Chain No.	Pitch	Width between inner plates	Roller diameter	Pin				Plate		Ultimate tensile strength	Weight per meter
	P	b min	D max	d	L1	L2	Type	h	t / T	Q min	q
	mm	mm	mm	mm	mm	mm		mm	mm	kN	kg/m
101005F1S	101.6	25	47.5	15.88	29.85	34.85	B	38.1	6	119	8.561
PM90R	101.6	22	47.6	11.1	23.5	27.7	B	32	4.5	95	5.8
PM94R	101.6	30	50.8	14.27	32	36.7	B	38.1	6.4	158	9.88
PM94RA	101.6	23.5	48	14.27	28.6	33.6	B	38.1	6.4	158	8.54
ES4P23	101.6	19.05	47.63	19.05	25.2	30.8	B	38.1	5.1	95	7.29
B5326H	152.4	19	47.5	19.05	24.9	31.6	A	38.1	5	88.9	5.78
ES6P21	152.4	19.05	47.63	19.05	25.2	30.8	A	38.1	5.1	95	5.89
B5289	152.4	25	66.8	22.07	30.5	37.1	A	50.8	6.4	178	11.35
B5289H	152.4	25	66.8	22.07	33.8	40.6	A	50.8	8	290	13.03
6×30000	152.4	25.4	66.7	26.9	33.9	40.9	A	50.8	6	133	10.36
ES6P36	152.4	25.4	66.7	26.9	37.1	43.9	A	50.8	7.8	215	13.43
ES6P36A	152.4	25.4	66.7	26.9	36.4	39.6	A	50.8	6.4/7.8	250	12.66
ES6P36C	152.4	25.4	66.7	26.9	30.7	40.5	A	50.8	5.1/7.1	200	11.52
ES6P36H	152.4	25.4	66.7	26.9	38.3	45.5	A	50.8	7.8/9	266.7	14.07
ES6P36HS	152.4	25.4	66.7	26.9	37.9	44.3	A	50.8	8	256	13.58
B5257	152.4	36	34.95	17.4	39.7	46.8	B	44.45	8	223	9.19
8×45000	152.4	38.1	88.9	30	44.4	43.9	A	61	8	280	18.98
09060	152.4	37.7	69.85	18.9	45.25	49.95	A	50.8	9.5	266.6	17.32
B5305	160	37.8	70	17.48	37.55	43.55	A	50.8	6.4	245	13.59
B5305H	160	37.8	70	26.9	41	40.3	A	50.8	8	330	15.717

# Palm Oil Chains with Straight Plate



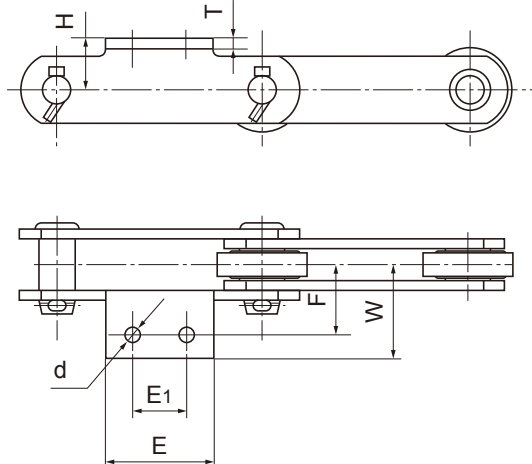
NET Chain No.	Pitch	Width between inner plates	Roller diameter	Pin			Type	Plate		Ultimate tensile strength	Weight per meter			
				D max	d	L1		L2	h			t / T	Q min	q
RF 101001F2	101.6	21.4	47.6	17.46	26.55	26.55	B	40	5.5	168.9	7.714			
4×15000	101.6	18.9	47.63	19.05	24.5	30.1	C	40	5/6	66.7	7.44			
RF 4×21000	101.6	19.05	47.63	19.05	22.5	28	C	39.4	4/5.1	116	6.574			
4×30000	101.6	25.4	66.7	28	28.8	28.8	B	50.8	5.1/7.1	133	14.07			
KT818EB	101.6	19.05	47.63	19.05	24.2	30.3	A	38.1	5.1	97.8	7.1			
KE818EB-R	101.6	19.05	47.63	19.05	24.2	24.2	B	38.1	5.1	97.8	6.96			
6×45000	152.4	38.1	88.9	31.8	43	43	B	61	9	200	32.43			
RF 6×50000	152.4	25.4	66.7	26.9	30.25	36.75	C	50.8	6.4	222	11.38			



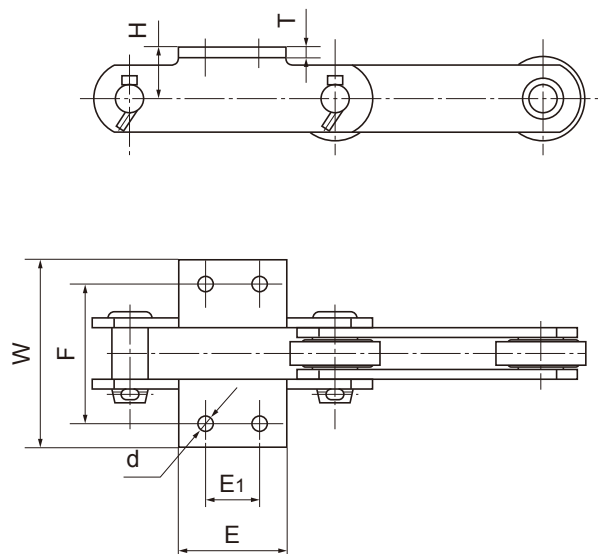
NET Chain No.	Pitch	Width between inner plates	Roller diameter	Pin			Plate		Ultimate tensile strength	Weight per meter				
				D max	d	L1	L2	h		t / T	Q min	S	R	F
RF05100S/R	100	22	22.23/40	11.3	24.8	28.4	32	4.5	75	3.734	5.077	/		
RF604R	152.4	30	50.8	14.27	31.9	36.8	38.1	6.4	158	7.85	/	8.3		
604RA	152.4	33	50.8	14.27	33.5	38.2	38.1	6.4	158	8.22	/	8.67		
RF6205S/R	152.4	36.8	34.9/57.2	15.88	40.8	44.2	44.5	8	186	9.133	11.97	/		

# Palm Oil Chains with Straight Plate & Attachment

### A2 Attachment



### K2 Attachment

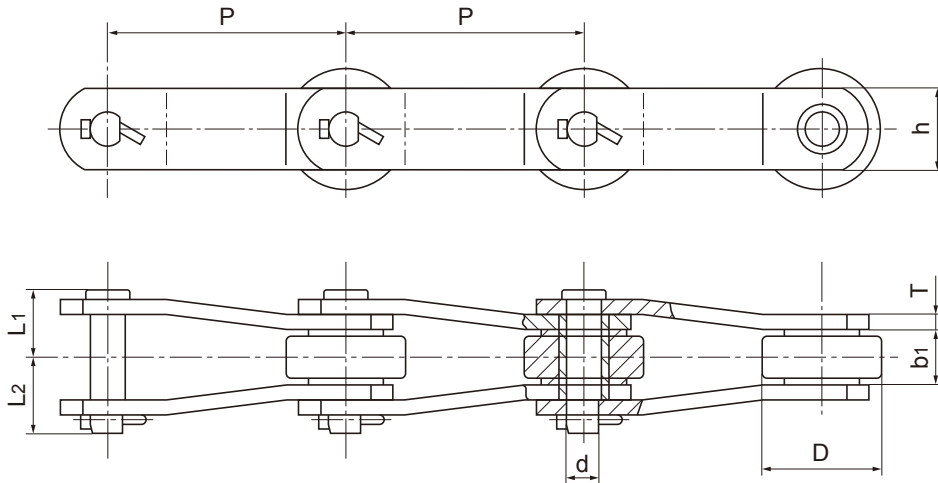


PALM OIL CHAINS

Att.No.	NET Chain No.	H	E1	E2	d1	F	W	T
		mm	mm	mm	mm	mm	mm	mm
A2	PM90R	16	31.8	63.5	11	44.5	61.5	4.5
	PM94R	19.05	31.8	63.5	10.7	44.5	62	6.4
	KT818ER	19.05	31.8	63.5	10.7	44.5	62.5	5.1
	4×30000	38	31.8	56	12.3	54	78.5	5.1
	RF101001F5	32	60	100	13	41.8	66.8	5.5
	RF101001F4	32	60	100	13	61	86	5.5
	RF604R	19.05	50.8	90	12	50.5	67	6.4
	ES6P36	38	57.2	107	12.3	54	78.5	7.8
	ES6P36HS	40	40	80	12	54.9	73.9	8

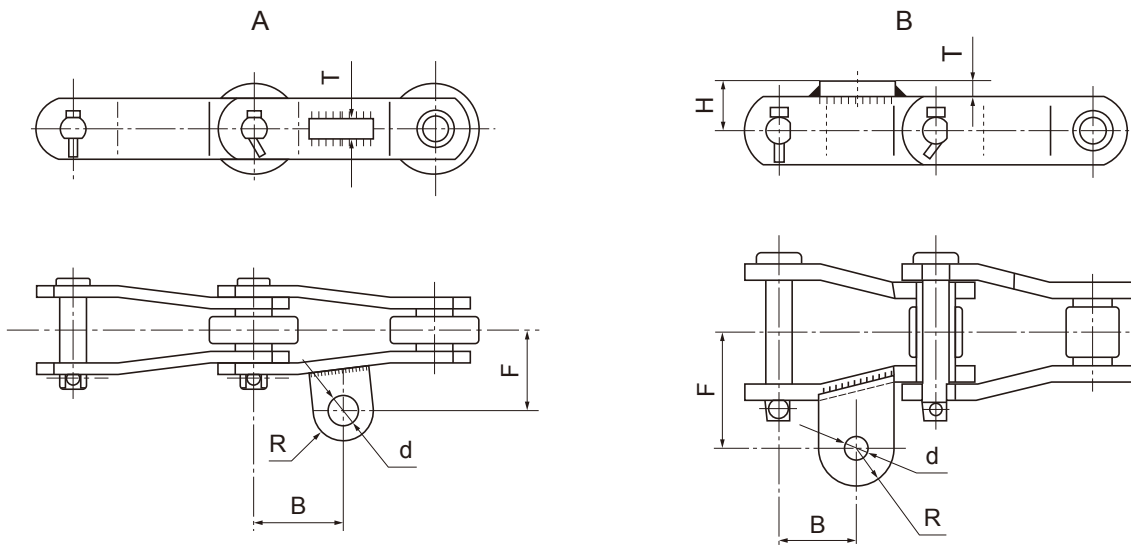
Att.No.	NET Chain No.	H	E1	E2	d1	F	W	T
		mm	mm	mm	mm	mm	mm	mm
K2	PM90R	16	31.8	63.5	11	89	123	4.5
	PM94R	19.1	31.8	63.5	10.7	89	124	6.4
	KT818EB	19.05	31.8	63.5	10.7	89	135	5.1
	4×30000	38	31.8	56	12.3	108	157	5.1
	RF604R	19.05	50.8	90	12	101	134	6.4
	ES6P36	38	57.2	107	12.3	108	157	7.8
	101005F1S	32	40	75	11	90	120	6

# Palm Oil Chains with Bent Plate and Attachment



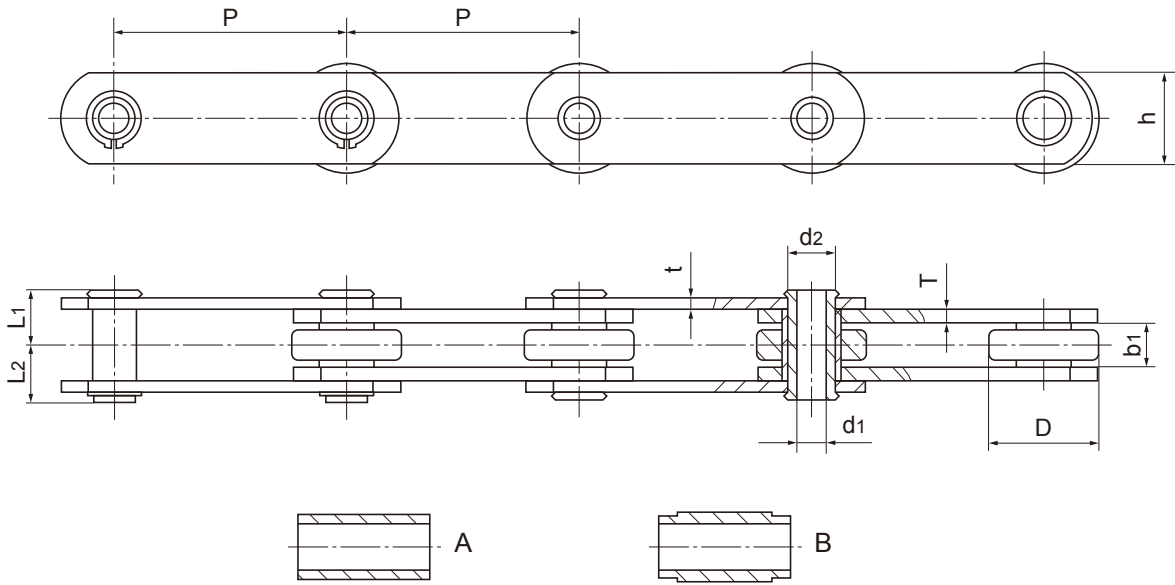
NET Chain No.	Pitch	Inside diameter	Roller diameter	Pin			Plate		Ultimate tensile strength	Weight per meter
	$P$	$b1_{min}$	$D_{max}$	$d$	$L1$	$L2$	$h$	$T$	$Q_{min}$	$q$
	mm	mm	mm	mm	mm	mm	mm	mm	kN	kg/m
B5029	66.17	28	22.23	11.1	31.7	35.1	28.6	6.4	122.8	5.41
B5234	152.4	34.9	76.2	22.3	43.9	53.4	50.8	9.5	355.6	17.93

## AS<sub>1</sub>



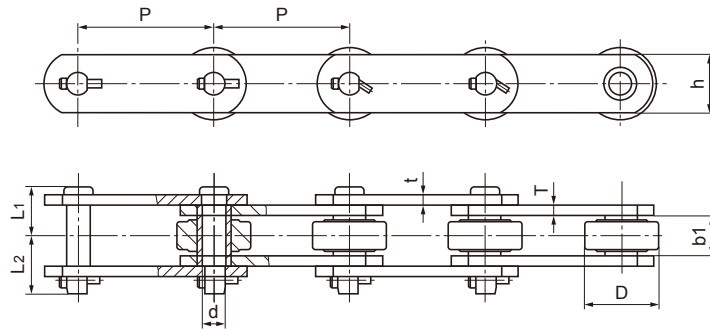
Att.No.	NET Chain No.	$H$	$T$	$B$	$F$	$R$	$d$	Type
		mm	mm	mm	mm	mm	mm	
AS1	B5234	/	15	76.2	66.7	25.4	20.64	A
	B5029	20.7	6.4	33.08	48.4	15.875	10	B

# Hollow Pin Palm Oil Chains

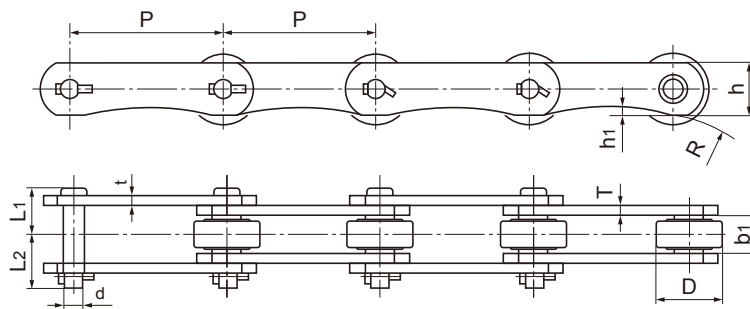


NET Chain No.	Pitch	Width between inner plates	Roller diameter	Pin					Plate		Ultimate tensile strength	Weight per meter
	P	b <sub>1</sub> min	D max	d <sub>1</sub>	d <sub>2</sub>	L <sub>1</sub>	L <sub>2</sub>	Type	h	t / T	Q min	q
	mm	mm	mm	mm	mm	mm	mm		mm	mm	kN	kg/m
4×15000HP	101.6	18.9	47.63	13.1	19.05	24.2	24.8	A	40	5/6	66.7	6.92
4×21000HP	101.6	19.05	47.63	13.1	19.05	23	24	B	39.4	5.1	95	6.56
RF4×21000HP	101.6	19.05	47.63	13.2	19.05	23.05	29.45	B	39.4	5.1	95	6.52
4×30000HP	101.6	25.4	66.7	19.56	25.8	28.8	29.4	B	50.8	5.1/7.1	200	12.723
6×35000HP	152.4	25.4	66.7	20.1	25.8	27.7	28.3	B	50.8	5.1/6	177.8	9.52
6×36000HP	152.4	25.4	66.7	20.1	26.9	28.8	29.4	B	50.8	5.1/7.1	200	10.1
IK6×36000HP	152.4	25.4	66.7	20.1	26.9	29.3	31.6	B	60.8	7.1/7.1	200	11
RF6×36000HP	152.4	25.4	66.7	20.1	26.9	29.4	30	A	50.8	6.4/6.4	200	10.35
6×36000HHP	152.4	25.4	66.7	20.1	26.9	30.8	31.6	B	50.8	6.4/7.8	220	11.06
6×50000HP	152.4	25.4	66.7	20.24	26.9	31	31.8	B	50.8	6.4/8	220	11.1
6×65000HP	152.4	25.4	66.7	20.24	28	32.6	33.4	B	50.8	8	288.9	11.763
8×45000HP	203.2	38.1	88.9	22.85	30	40	44.2	A	61	8	280	17.27

# Straight Sidebar Type Sugar Mill Chains

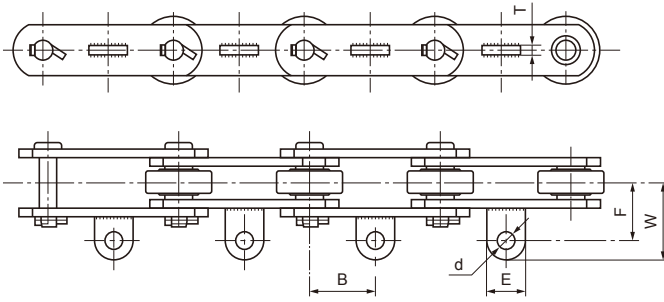


NET Chain No.	Pitch	Width between inner plates	Roller diameter	Pin			Plate		Ultimate tensile strength	Weight per meter
	P	b <sub>min</sub>	D <sub>max</sub>	d	L <sub>1</sub>	L <sub>2</sub>	H	t / T	Q <sub>min</sub>	q
	mm	mm	mm	mm	mm	mm	mm	mm	kN	kg/m
P77.5	77.5	36.7	31.7	16	39.5	47.5	38	8	188	10.3
0904	101.6	29.3	50.8	17.46	31.1	47.4	44.5	8	178.4	13.16
09060	152.4	37.7	69.85/76.2	18.9	45.2	49.1	50.8	9.5	250	17.2/18.36
09061	152.4	37.7	69.85	18.9	44.9	50.3	57.2	9.5	377.9	18.74
1796	152.4	37.8	69.85	22.23	44.2	52.9	57.2	9.5	444.5	18.5
1796	152.4	37.8	76.2	22.23	44.2	52.9	57.2	9.5	444.5	19.5
1796	152.4	37.8	73	22.23	44.2	52.9	57.2	9.5	444.5	19.2
09063	152.4	38	76.2	23.83	47.4	54.6	60.3	10.3	622.3	21.88
C09063	152.4	38	76.2	23.83	47.4	54.6	61.9	10.3	635	22.2
GC09063	152.4	38	76.2	23.83	46.7	56.3	63.5	10.3	600	23.67



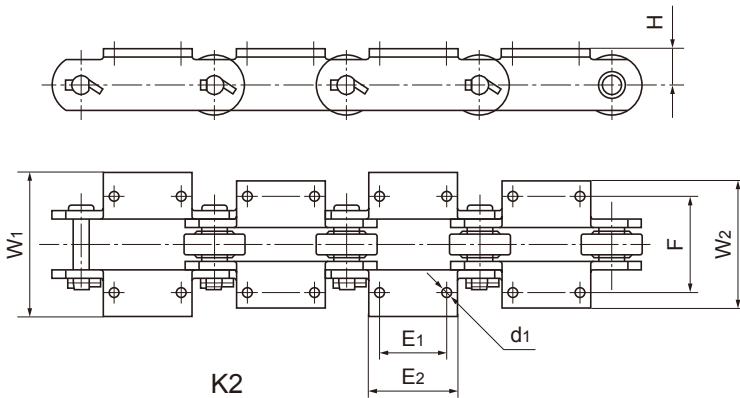
NET Chain No.	Pitch	Width between inner plates	Roller diameter	Pin			Plate				Ultimate tensile strength	Weight per meter
	P	b <sub>min</sub>	D <sub>max</sub>	d	L <sub>1</sub>	L <sub>2</sub>	h	h <sub>1</sub>	R	t / T	Q <sub>min</sub>	q
	mm	mm	mm	mm	mm	mm	mm	mm	mm	mm	kN	kg/m
996	152.4	37.7	69.85	18.9	44.9	49.4	54	/	/	10	311	18.7
SS2124	152.4	40	69.8	19.05	46.1	53.6	52.9	6.8	266.7	9.5	229.8	18.03

# Straight Sidebar Type Sugar Mill Chain Attachments



A42 AS2

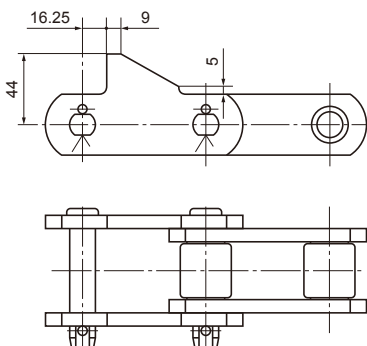
NET Chain No.	B	F	W	E	d	T
	mm	mm	mm	mm	mm	mm
09060	76.2	67	87.4	45	21	15
09061	76.2	67	87.4	45	21	15
1796	76.2	67	87.4	45	21	15
GC09063	76.2	63.5	83	45	20	15.3
SS1131	76.2	65.88	91.28	50.8	17.46	15.48
DN2184	76.2	66.7	92.1/88.74	50.8/44	21	15



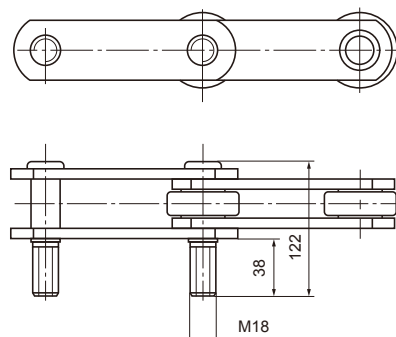
K2



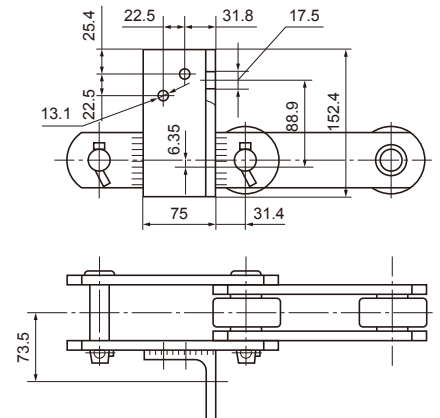
NET Chain No.	H	E <sub>1</sub>	E <sub>2</sub>	d <sub>1</sub>	F	W <sub>1</sub>	W <sub>2</sub>
	mm	mm	mm	mm	mm	mm	mm
0904	31.8	36.6	66.7	9.5	89	137.4	137.4
09060	41.3	76.2	114.3	13	111.1	171.5	151.1
09061	41.3	76.2	114.3	13	111.1	165.1	144.7
1796	41.3	76.2	114.3	11.1/13/14	111.1	165.1	144.7
C09063	44.5	76.2	114.3	14.3/12.7	111.1	165.1	143.1
SS996	41.4	76.2	139.7	12.7	111.25	152.4	152.4
SS1131	41.28	66.68	139.7	14.29	152.4	187.3	187.3
SS960	41.28	76.2	111.13	14.29	111.13	152.4	152.4
SS600	41.4	76.2	111.25	12.7	111.25	147.32	147.32
SS800	55.6	114.3	177.8	17.46	131.8	182.6	182.6



H Attachment

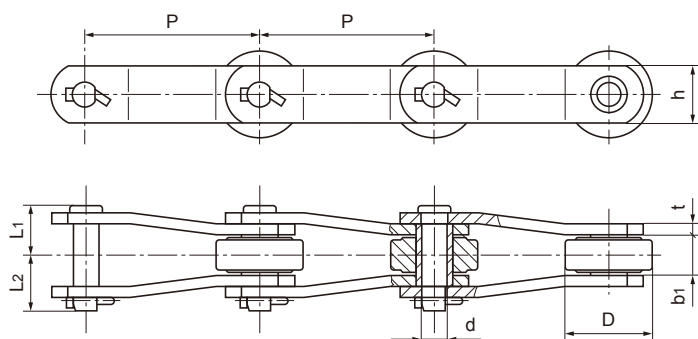


SD Attachment

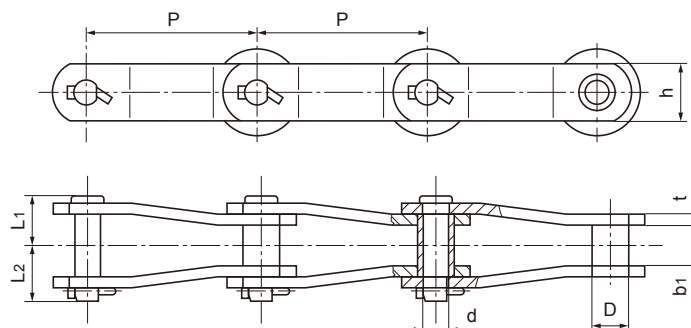


F Attachment

# Cranked Sidebar Type Sugar Mill Chains



NET Chain No.	Pitch	Inside diameter	Roller diameter	Pin			Plate		Ultimate tensile strength	Weight per meter
	P	b <sub>min</sub>	D <sub>max</sub>	d	L <sub>1</sub>	L <sub>2</sub>	h	T	Q <sub>min</sub>	q
	mm	mm	mm	mm	mm	mm	mm	mm	kN	kg/m
CR09060	152.4	38.2	69.9	18.9	45	53	50.8	9.5	303.8	17.5
CR09063	152.4	38	76.2	23.83	47.1	54.9	60.3	10.3	622.3	21.83
CR1796	152.4	37.8	69.85/76.2	22.23	44.2	52.9	57.2	9.5	444.5	18.59/21.3
D2184	152.4	34.9	76.2	22.23	43.9	51.2	50.8	9.5	355.6	17.7
PB2184	152.4	36	76.2	22.23	45.4	52.8	52	10	396	19.31
SS800	203.2	46.1	88.9	25.4	59.9	69.1	75	12.7	750	30.58
8184	203.2	45.9	88.9	25.4	59.7	65.8	69.9	12.7	742.4	29.2
2284	228.6	36.9	90	25.4	45.4	53	65	10	420	21.88
2284H	228.6	36.9	90	25.4	49.5	57.2	65	12	510	24.7
22840	228.6	46	99	32	62.7	72.7	86	15	884	40.21
XM228.6V2	228.6	36.9	89	25.4	47.9	55.1	65	10	512	22.772
SS1113	102.6	37.5	50.8	17.5	38	45	38.1	6.3	93.1	13.2
SS1125	101.6	32.6	50.8	17.4	38	45	44.5	7.9	152.9	14.3
SS1130	152.4	37.6	63.5	19.05	38.5	45.6	50.8	6.4	137	12.8

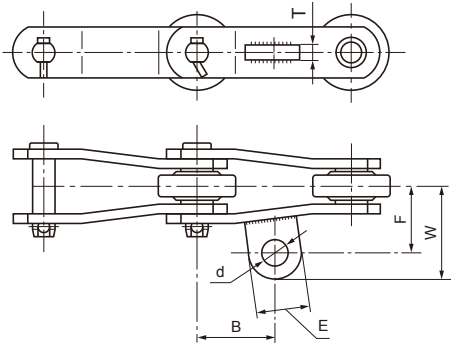


NET Chain No.	Pitch	Inside diameter	Bush diameter	Pin			Plate		Ultimate tensile strength	Weight per meter
	P	b <sub>min</sub>	D <sub>max</sub>	d	L <sub>1</sub>	L <sub>2</sub>	h	T	Q <sub>min</sub>	q
	mm	mm	mm	mm	mm	mm	mm	mm	kN	kg/m
SS100D	100	33.27	33.27	17.27	38.4	48.6	44.5	8	200	10.47
B5094	101.6	39.8	36.5	15.77	43.3	46.1	44.45	8	180	11.36
SS4103	77.98	25.4	31.75	19.05	42.4	49.8	38.1	11.2	97.8	13.14
SS0340	101.6	41.3	36.5	15.88	45.1	49.2	44.5	8	142	10.9
SS2103	77.98	35.05	31.75	19.05	37.1	42.4	38.1	6.4	128.7	9.42
SS488	66.27	19.05	22.35	11.18	30.2	47.5	25.4	7.9	48.9	6.04

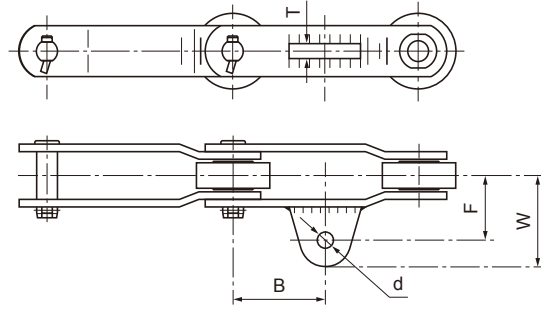
SUGAR MILL CHAINS



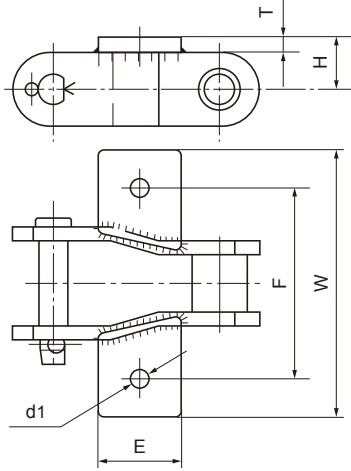
# Cranked Sidebar Type Sugar Mill Chain Attachments



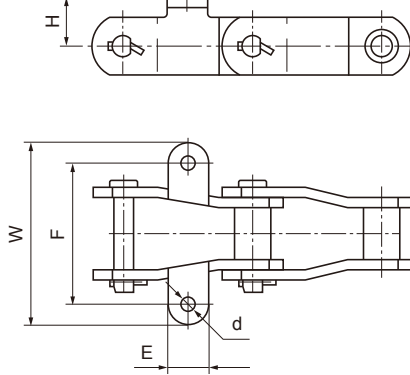
A42/AS2



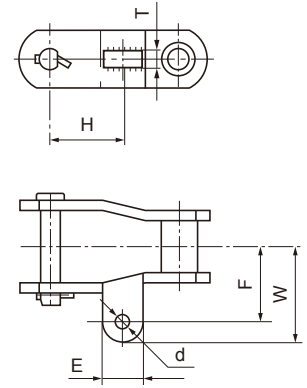
AS2



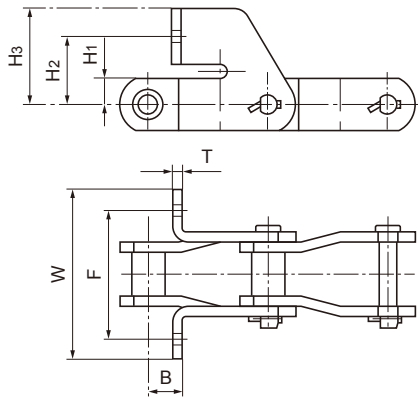
K1-A



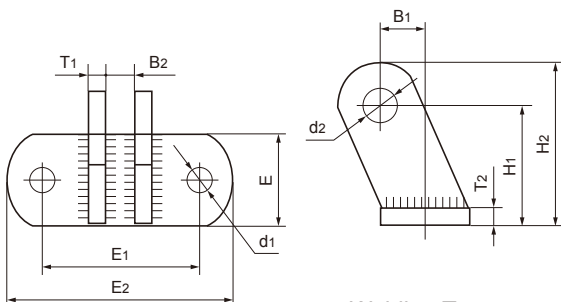
K1-B



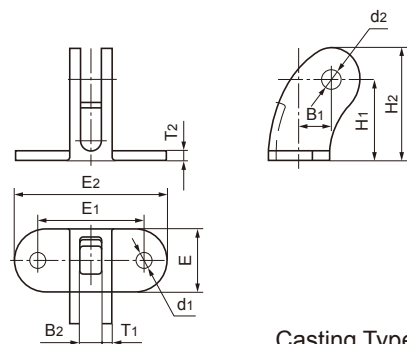
K1-C



F2



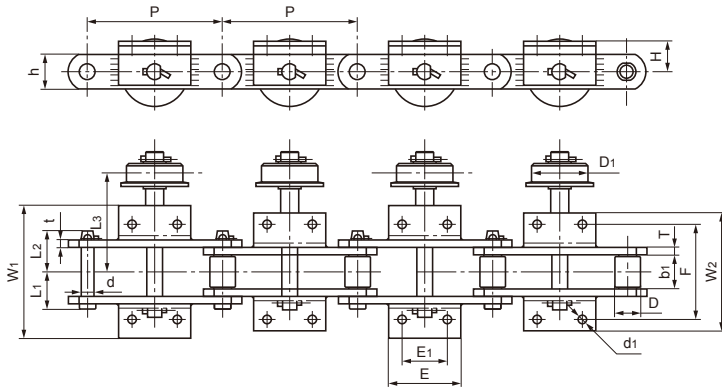
Welding Type



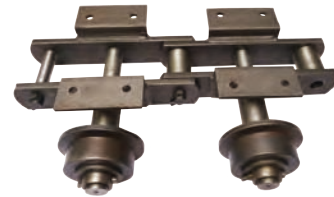
Casting Type

# Sugar Mill Chains

## Sugar Mill Chains With Side Roller

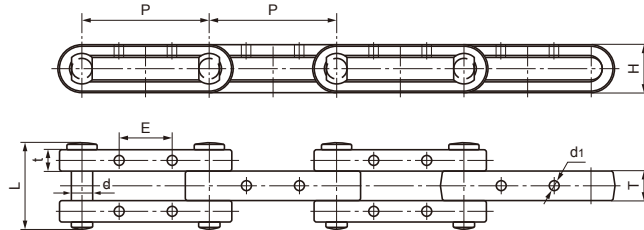


H	F	L3	W1	W2	E1	E	d1
mm	mm	mm	mm	mm	mm	mm	mm
70	210	219	293.4	259.5	100	160	19
70	210	219	394	259.5	100	160	19



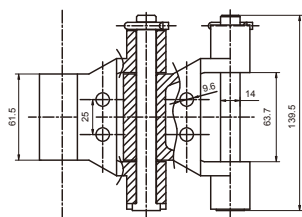
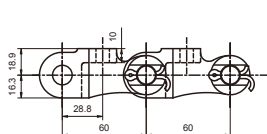
NET Chain No.	Pitch	Width between inner plates	Roller diameter		Pin			Plate		Ultimate tensile strength
	P	b min	D	D1	d	L1	L2	t / T	t / T	Q min
	mm	mm	mm	mm	mm	mm	mm	mm	mm	kN
HR30054S	300	77	57.15	125	28	81.7	89	76.2	16	670
HR30055S	300	77	57.15	125	28	81.7	89	76.2	16	670

## Drop Forged Sugar Mill Chains

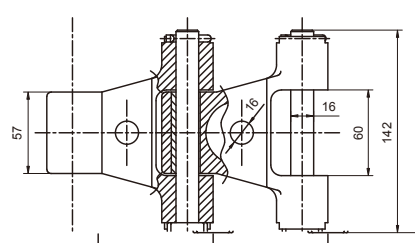
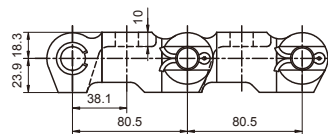


NET Chain No.	Pitch	Pin		Sidebar					Ultimate tensile strength	Weight per meter
	P	d	L	H	t	T	d1	E	Q min	q
	mm	mm	mm	mm	mm	mm	mm	mm	kN	kg/m
DJ-215	152.4	39	158	77.8	38.1	50.8	17	76.2	1120	56.8
3850A	228.6	39	152	80	38	50	17	95	1000	32.05
3850B	228.6	39	132	80	40	50	17	95	1000	32.4
5075	228.6	39	201	83	50	75	17	95	1000	48.5

## Cast Sugar Mill Chains

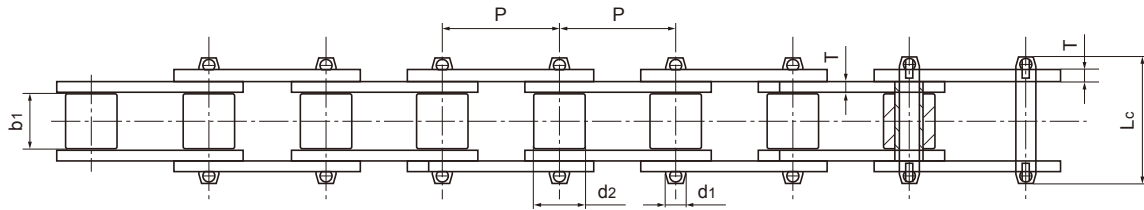
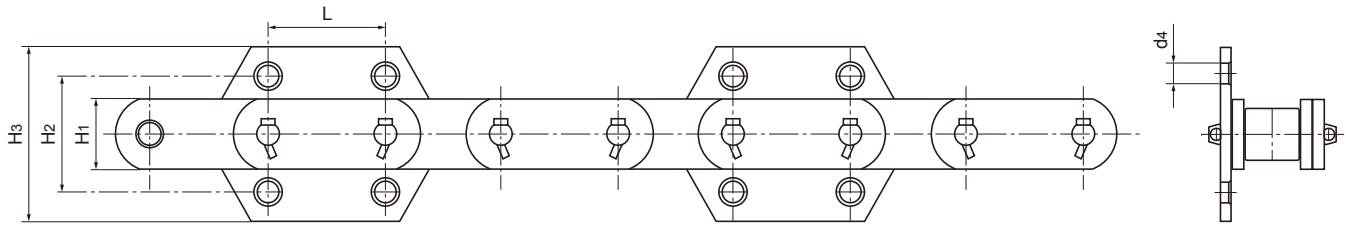


5174E4



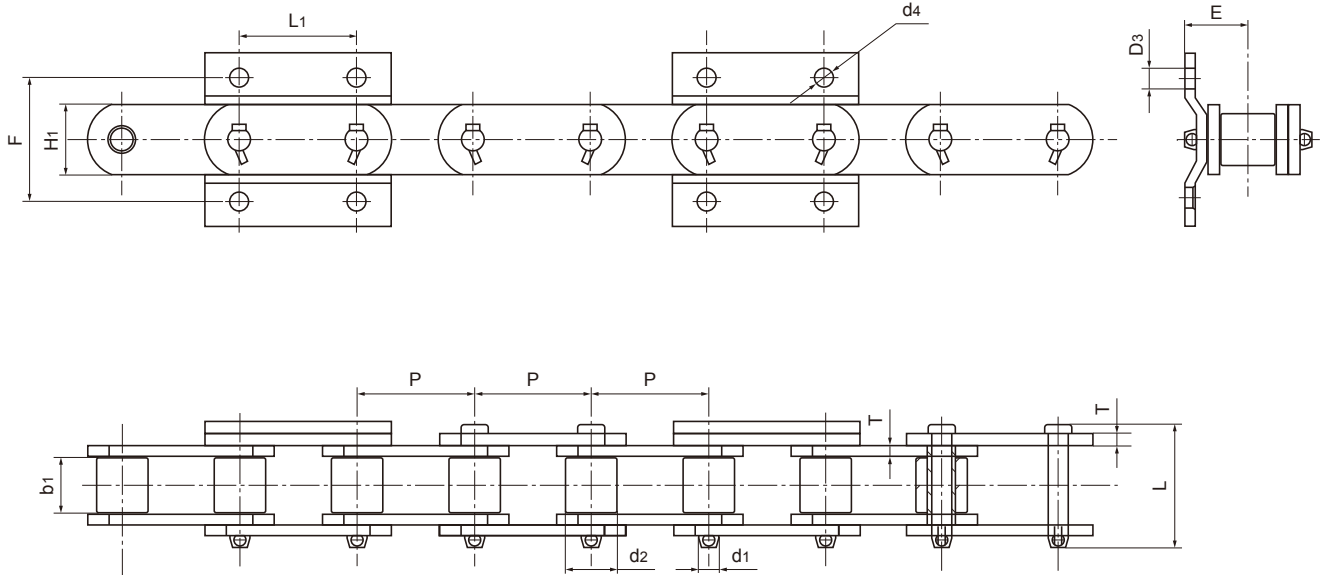
907E51

# Bucket Elevator Chains



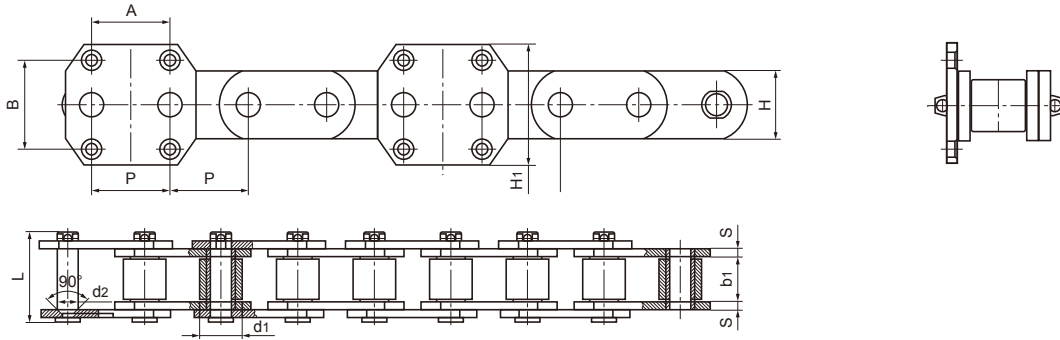
Type	NET Chain No.	Pitch	Roller diameter	Width between inner plates	Pin diameter	Plate Length	Plate Depth	Plate Thickness	Attachment dimension				Ultimate tensile strength
		P	d <sub>2</sub>	b <sub>1</sub>	d <sub>1</sub>	L <sub>c</sub>	H <sub>1</sub>	T	H <sub>3</sub>	H <sub>2</sub>	L	d <sub>4</sub>	Q <sub>min</sub>
		mm	mm	mm	mm	mm	mm	mm	mm	mm	mm	mm	mm
	P100F112.04	100.0	44.5	52.0	19.30	120.0	60.0	10.0	150	105	100	18.5	350.0
	P100F107.04	100.0	50.8	58.0	25.40	120.0	75.0	10.0	150	105	100	18.5	550.0
NE15	P101.6F92	101.6	26.5	27.0	11.50	70.0	35.0	6.0	-	90	40	12.0	100.0
NE30	P152F119	152.4	36.0	36.5	15.50	90.0	50.0	8.0	-	120	60	14.0	240.0
NE50	P152F120	152.4	36.0	36.5	15.50	90.0	50.0	8.0	110	70	75	14.0	240.0
	P152F126	152.4	34.9	37.1	15.80	88.0	44.5	7.9	110	70	75	15.0	186.2
NE100	P200F64	200.0	44.5	51.8	19.10	120.0	60.0	10.0	125	80	100	18.0	380.0
NE150	P200F65	200.0	48.5	57.6	22.20	120.0	75.0	10.0	125	80	100	18.0	550.0
	P200F63	200.0	48.5	57.6	22.20	125.0	75.0	10.0	125	80	100	18.5	315.0
NE200	P250F42	250.0	63.5	67.4	31.75	143.0	90.0	12.0	150	100	140	18.0	750.0
NE300	P250F43	250.0	63.5	67.4	31.75	146.0	90.0	12.0	150	100	140	18.0	750.0
NE400	P300F9	300.0	70.0	75.0	35.00	170.0	100.0	16.0	180	125	170	22.0	1065.0

# Bucket Elevator Chains

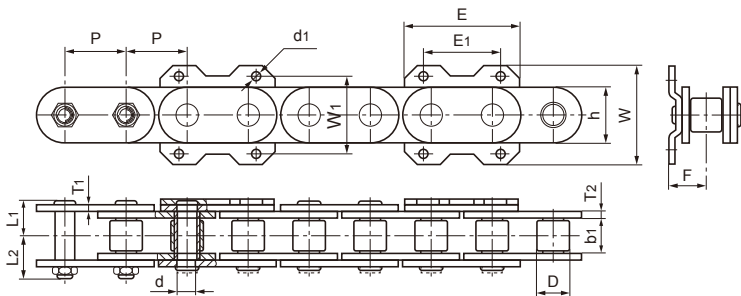


NET Chain No.	Pitch	Roller diameter	Width between inner plates	Pin diameter	Plate Length	Plate Depth	Plate Thickness	Attachment dimension				Ultimate tensile strength
	P	d2	b1	d1	Lc	H1	T	H3	H2	L	d4	Q min
	mm	mm	mm	mm	mm	mm	mm	mm	mm	mm	mm	kN
P76.2F31	76.2	34.9	37.1	15.9	86.5	44.5	7.9	80	75	14	46.5	253.6
P75F18	75.0	29.0	30.0	14.5	69.0	38.1	6.3	80	75	14	38.5	204.9
P75F22	75.0	32.0	37.1	15.9	86.5	44.5	7.9	75	75	14	46.5	253.6
P75F24	75.0	29.0	30.0	14.5	69.0	38.1	6.3	80	75	14	38.5	204.9
P100F97	100.0	40.0	51.4	19.1	109.5	50.8	9.5	100	100	16	58.0	351.0
P100F127-G4	100.0	50.0	57.5	24.0	117.0	63.5	9.5	100	100	16	62.5	470.0

# Bucket Elevator Chains



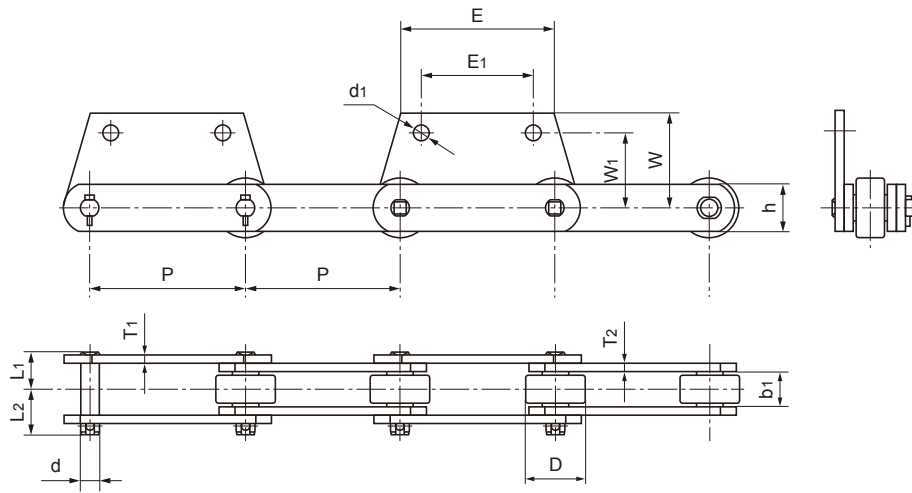
NET Chain No.	Pitch	Width between inner plates	Roller diameter	Pin diameter	Plate Length	Plate Width	Plate Thickness	Att. Width	Chain bucket mounting dimensions
	P	b <sub>1</sub>	d <sub>1</sub>	d <sub>2</sub>	L	H	S	H <sub>1</sub>	A×B
	mm	mm	mm	mm	mm	mm	mm	mm	mm
NSE200	100	51.8	44.5	19.1	110	60	10	150	100×105
NES300	100	57.6	48.5	22.23	115	75	10	150	100×105
NSE400	125	67.4	63.5	31.75	145	90	12	180	125×130
NSE500	125	75	70	35	170	100	16	180	125×130
NSE700	125	75	70	36	170	100	16	190	125×130
NSE800	150	80	78	38.1	172	120	16	230	150×170
NSE1000	150	85	83	43	180	125	18	225	150×170



NET Chain No.	E <sub>1</sub>	E	W <sub>1</sub>	W	d <sub>1</sub>	F
	mm	mm	mm	mm	mm	mm
NSE1000A	190	283	190	242	22	97
NSE1000B	190	283	190	242	22	100
NSE1000C	190	283	190	242	22	100
NSE1000D	190	283	144	242	22	100

NET Chain No.	Pitch	Roller diameter	Width between inner sidebars	Pin		Plate		Ultimate tensile strength	Weight per meter	
	P	D <sub>max</sub>	b <sub>1 min</sub>	d	L <sub>1</sub>	L <sub>2</sub>	h	T <sub>1</sub> /T <sub>2</sub>	Q <sub>min</sub>	q
	mm	mm	mm	mm	mm	mm	mm	mm	kN	kg/m
NSE1000A	150	82	88	48	90	101.5	144	16/18	2000	97.6
NSE1000B	150	82	94.5	48	93.25	104.75	144	16/18	2000	99.34
NSE1000C	150	82	94.5	48	93.25	104.75	137	16/18	2000	98.6
NSE1000D	150	82	94.5	48	93.25	104.75	144	16/18	2000	98.1

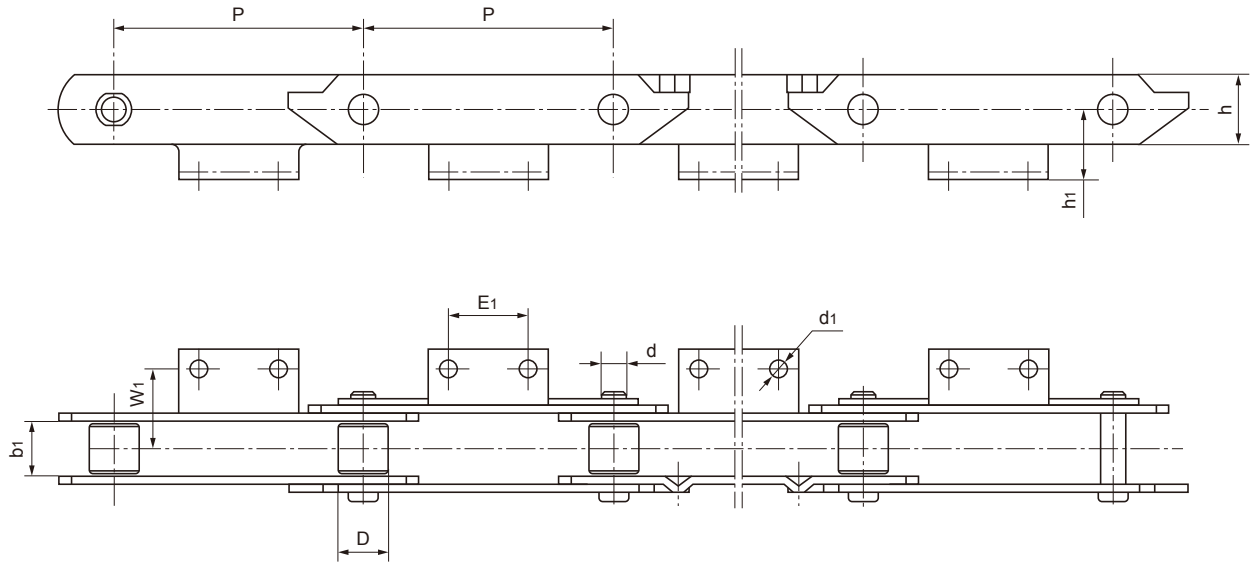
# Feed Taker Chains



NET Chain No.	Pitch	Roller diameter	Width between inner sidebars	Pin			Plate		Ultimate tensile strength	Weight per meter
	P	D <sub>max</sub>	b <sub>1 min</sub>	d	L <sub>1</sub>	L <sub>2</sub>	h	T <sub>1</sub> /T <sub>2</sub>	Q <sub>min</sub>	q
	mm	mm	mm	mm	mm	mm	mm	mm	kN	kg/m
SPN250-SH2	250	95	55	30	62	70	75	14	750	40
SPN250A-SH2	250	95	55	28	64.85	70.35	75	14	750	39.5
SPN315B-SH2	315	120	55	36	65	74	100	14	900	49.7
SPN315C-SH2	315	120	55	36	64.9	66.7	100	14	900	49.4
SPN315D-SH2	315	120	50	36	54.6	63.4	100	10	640	41.6
SPN315E-SH2	315	120	55	39	64.6	74.4	100	14	900	50.2
SPN315F-SH2	315	120	55	36	56.6	66.4	100	10	640	40.3
SPN315G-SH2	315	120	55	36	65	74	90	14	900	46.8
SPN315J-SH2	315	120	64	30	65.75	74.25	85	12/14	900	45.2
SPN315K-SH2	315	120	62.5	40	68.4	83.6	100	14	900	52.6
SPN315L-SH2	315	120	62.5	40	68.4	78.1	100	14	1078	52.1
SPN400-SH2	400	140	59.3	40	71.75	103.25	120	16	1500	64.5

NET Chain No.	E <sub>1</sub>	E	W <sub>1</sub>	W	d <sub>1</sub>
	mm	mm	mm	mm	mm
SPN250-SH2	180	246	120	152.5	25
SPN250A-SH2	180	253.6	110	140	25
SPN315B-SH2	200	315	110	140	25
SPN315C-SH2	200	315	110	140	25
SPN315D-SH2	200	305	130	160	25
SPN315E-SH2	200	330	110	140	25
SPN315F-SH2	200	305	130	160	25
SPN315G-SH2	200	315	110	140	25
SPN315J-SH2	200	315	130	159.5	25
SPN315K-SH2	200	315	110	150	25
SPN315L-SH2	200	315	110	140	25
SPN400-SH2	300	400	130	175	26

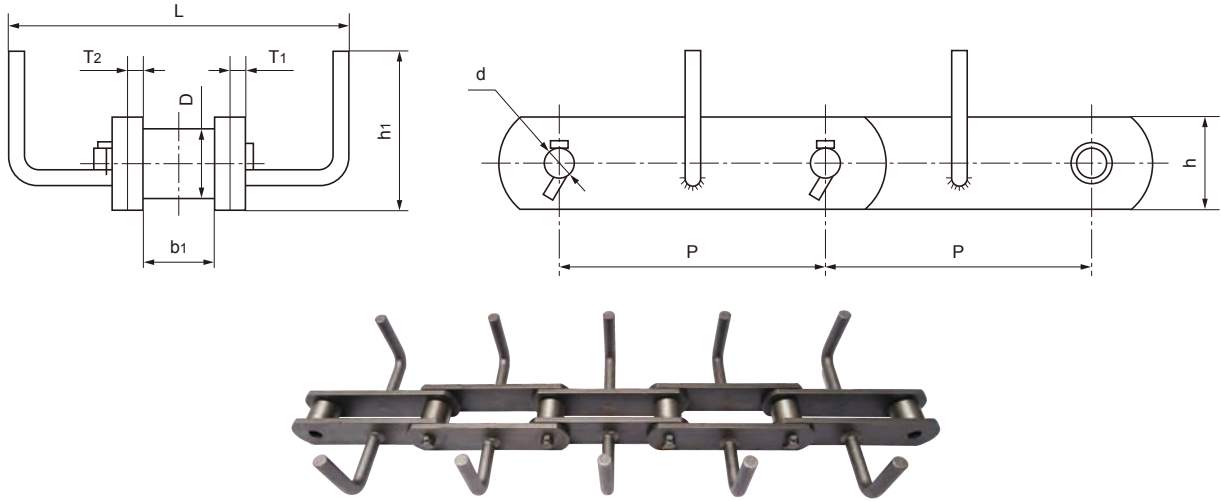
# Apron Chains



NET Chain No.	Pitch	Roller diameter	Width between inner sidebars	Pin	Sidebar	Ultimate tensile strength
	$P$	$D_{max}$	$b_1_{min}$	$d$	$h$	$Q_{min}$
	mm	mm	mm	mm	mm	kN
STN250	250	50	55	25	70	350
STN250A	250	54	60	36	90	600
STN250B	250	40	45	26	65	350
STN250C	250	40	60	26	80	560
STN250D	250	60	62	30	80	600
STN250E	250	44.3	60	29.7	90	600
STN250F	250	40	45	26	70	350
STN315G	315	44	65	30	90	1500

NET Chain No.	$h_1$	$F$	$E_1$	$d_1$
	mm	mm	mm	mm
STN250	70	80	80	18
STN250A	70	85	80	14
STN250B	59.5	70	80	14
STN250C	70	85	80	14
STN250D	72	90	85	16
STN250E	70	85	80	14
STN250F	60	70	80	14
STN315G	60	133.5	55	12.7

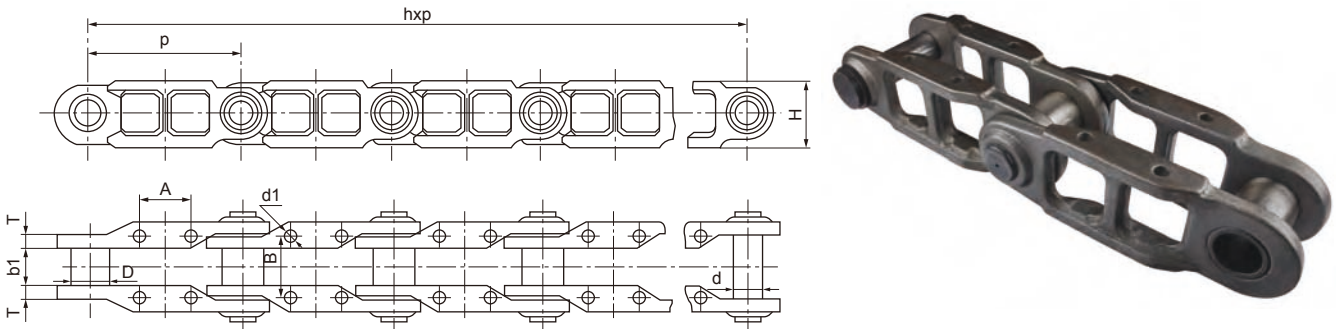
## FU Series of Scraper Chains



NET Chain No.	Pitch	Roller diameter	Width between inner sidebars	Pin	Sidebar		Distance between the top of scraoer and the bottom of sidebar	Distance between scrapers	Ultimate Tensile Strength
	P	D(max)	b1(min)	d	h	T1/T2	h1	L	Q(min)
	mm	mm	mm	mm	mm	mm	mm	mm	kN
FU150	101.6	26.5	27	11.5	35	6	60	130	120
FU200	152.4	36	36.5	15.5	50	8	75	175	240
FU270	152.4	36	36.5	15.5	50	8	100	215	240
FU350	200	44.5	55	19	60	10	145	310	360
FU350H	200	48.5	57.6	22.2	75	10	160	320	480
FU410	200	41/44.5	51.8	19.1	60	10	160	380	360
FU410H	200	48.5	57.6	22.2	75	10	160	380	480
SSN200-U	200	60	60	30	82	12	174	416	700
FU500	300	63.5	67.5	31.75	90	12	200	457	560
FU500H	300	65	67.4	31.75	100	12	235	460	730
FU600	300	70	75	35	100	16	235	560	1000

CEMENT INDUSTRIAL CHAINS

## SCD Series Forged Conveyor Chains



Unit: mm

NET Chain No.	Pitch P	Width between inner plates b1	Bush diameter D	Pin diameter d	Fixed hole distance A×B	Fixed hole diameter d1	Plate H	Plate thickness T
SCD630	250	60	60	44	80×100	14	110	20
SCD630	250	50	50	32	80×80	14	100	15
SCD630	250	50	50	34	80×80	14	100	15
SCD800	250	66	66	44	80×100	14	110	26